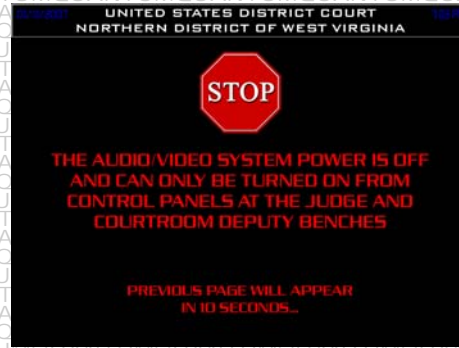


Quick Reference Guide



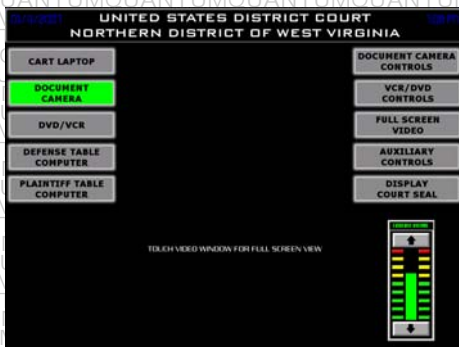
When the equipment rack is first powered on or a touch panel comes online, the first screen displayed is the **COURT SEAL PAGE**. If the system power is on, pressing anywhere on this page will display the Main Menu.



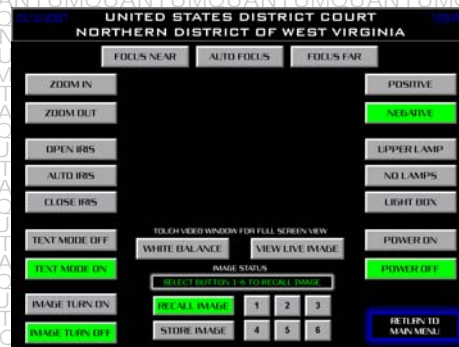
If the system power is off and you press anywhere on the Court Seal page, the page shown above will appear. This informs you that the system is off and can only be turned on from control panels at the Judge and Courtroom Deputy benches. After ten seconds, the Court Seal Page will reappear.



When the power is activated from the Judge or Courtroom Deputy control panels, the page shown above is displayed while the electrical circuits are activated. After the power sequence is complete, a reset page will appear while the system sets all of its default settings. After the reset sequence is complete, the Main Menu page will appear.



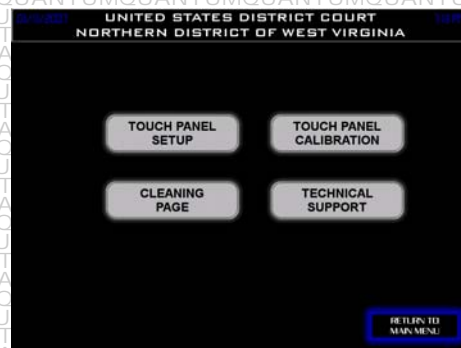
The **MAIN MENU** allows quick access to individual control pages and selection of video evidence sources. Press the menu buttons on the right side of the **MAIN MENU PAGE** to access related control pages. Press the buttons on the left side of the page to select video evidence sources. Selection of the Document Camera and DVD/VCR deck automatically display control pages. A video window in the center of the page displays the currently selected video source. Pressing directly on the video window or pressing the **FULL SCREEN VIDEO** button displays the currently selected video source full screen and allows you to annotate over the displayed image.



The **DOCUMENT CAMERA CONTROLS PAGE** allows you to control most of the features of the Document Camera (such as zoom, focus lamp selection et cetera.) located in the Presenter Cart. Buttons at the bottom of this page allow you to store the currently displayed image or recall a previously stored image. A video window in the center of the page displays video from the document camera. Pressing directly on the video window or pressing the **FULL SCREEN VIDEO** button displays the document camera full screen and allows you to annotate over the displayed image.



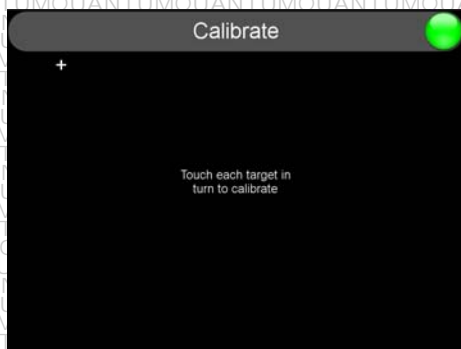
The **DVD/VCR CONTROLS PAGE** allows you to control the DVD/VCR deck located in the presentation cart. Most of the controls on this page operate like those on standard DVD and VCR decks. There are separate buttons for selecting either the VCR or DVD section of the deck. A video window in the center of the page displays video from the DVD/VCR deck. Pressing directly on the video window or pressing the **FULL SCREEN VIDEO** button displays the DVD/VCR full screen and allows you to annotate over the displayed image.



The **FULL SCREEN VIDEO PAGE** allows you to view the currently selected video evidence source full screen. When this page is displayed, it is possible to annotate over the displayed image. An invisible button is located at the top left corner of this page. Pressing this invisible button (anywhere in the top left corner of the screen) will cause the Main Menu to reappear.

The **AUXILIARY PAGE** allows you to access the touch panel setup pages, the cleaning page, the technical support page, and allows you to calibrate the touch panel.

The **TOUCH PANEL SETUP PAGE** allows you to display information and view/edit internal settings of the presentation cart touch panel interface. Some setup pages are password protected.



The **CALIBRATE PAGE** is used to calibrate the touch panel so that it will respond based on the exact location you are touching. Upon selecting this function, a cross hair symbol will display in the upper left corner of the screen. Press directly on the center of the symbol and another symbol will appear. Continue pressing in the center of the displayed symbols until the screen displays **CALIBRATION GOOD...TOUCH ANYWHERE TO CONTINUE**. Press anywhere on the screen after this message appears to return to the previous page and complete the calibration process.

The **CLEANING PAGE** allows you to clean your touch panel without activating buttons. Follow the on-screen instructions. A small timer appears in the lower right hand corner of the screen displaying the amount of time remaining before the **AUXILIARY CONTROL PAGE** automatically reappears.

The **TECHNICAL SUPPORT PAGE** displays information for contacting **QUANTUM TECHNOLOGIES**.

Phone: 256.922.1200
Fax: 256.922.1221
Email: qti2@quantum-intl.com

PLEASE CONSULT YOUR OPERATIONS MANUAL FOR DETAILED INSTRUCTIONS AND INFORMATION REGARDING ALL ASPECTS OF YOUR SYSTEM. FOR INFORMATION ON INDIVIDUAL PIECES OF EQUIPMENT, PLEASE REFERENCE YOUR MAINTENANCE MANUAL. ALL INFORMATION IS PROVIDED IN ELECTRONIC AND PRINTED FORMAT.

If your system needs repair, call us and we will arrange service as soon as possible. Dial '0' for the operator and ask to speak with the *Service Coordinator*. For warranty coverage, **do not** call a local service provider directly: **QUANTUM** will arrange all necessary service.

